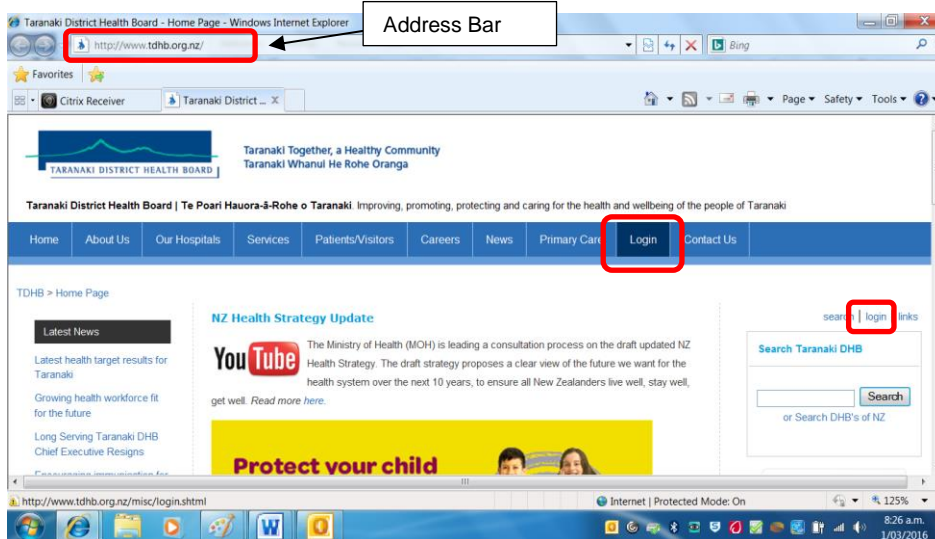


Logging In Remotely (You are not at work eg you are at home / a conference)

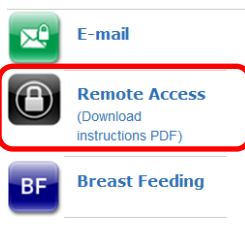
- Click on icon you browse internet with (example of Internet explorer on desktop below)



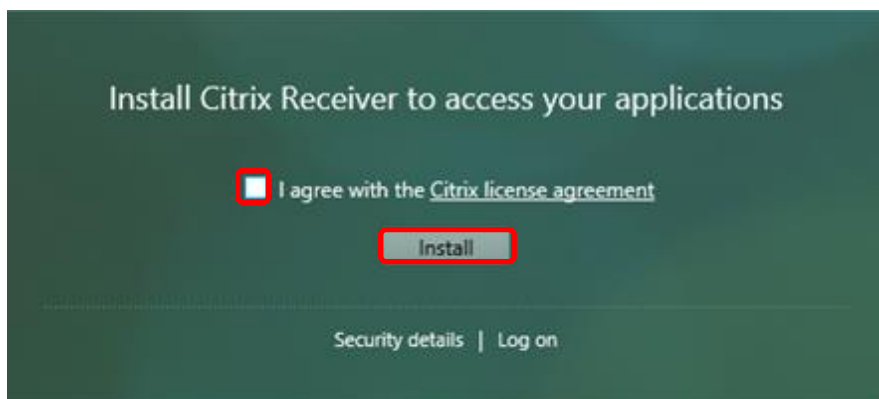
- Type <http://tdhb.org.nz> in the address bar
- Click **Login** on home page (examples circled below)



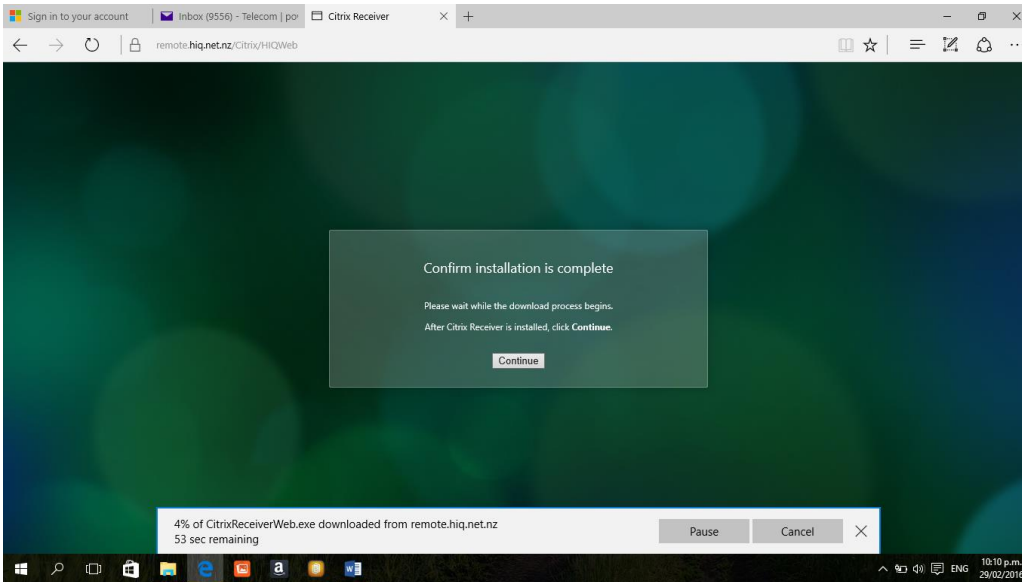
- The following will be displayed. Click **Remote Access**



- Tick I agree with the **Citrix Licence Agreement**
- Click **Install**



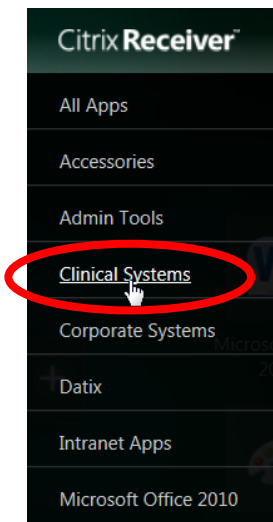
- Click **Run** and wait for Citrix Installer



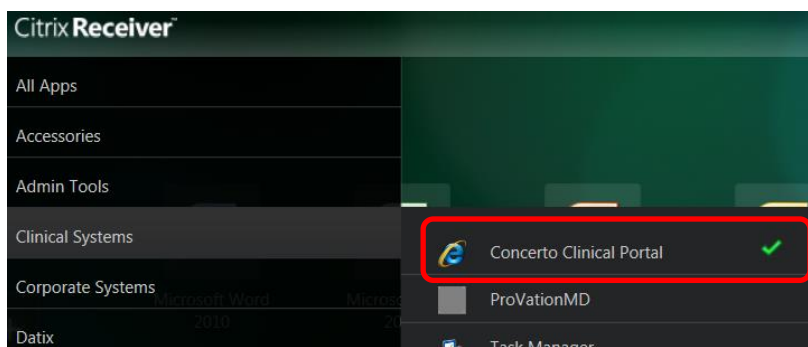
- Once installed, click on  to add applications (apps).



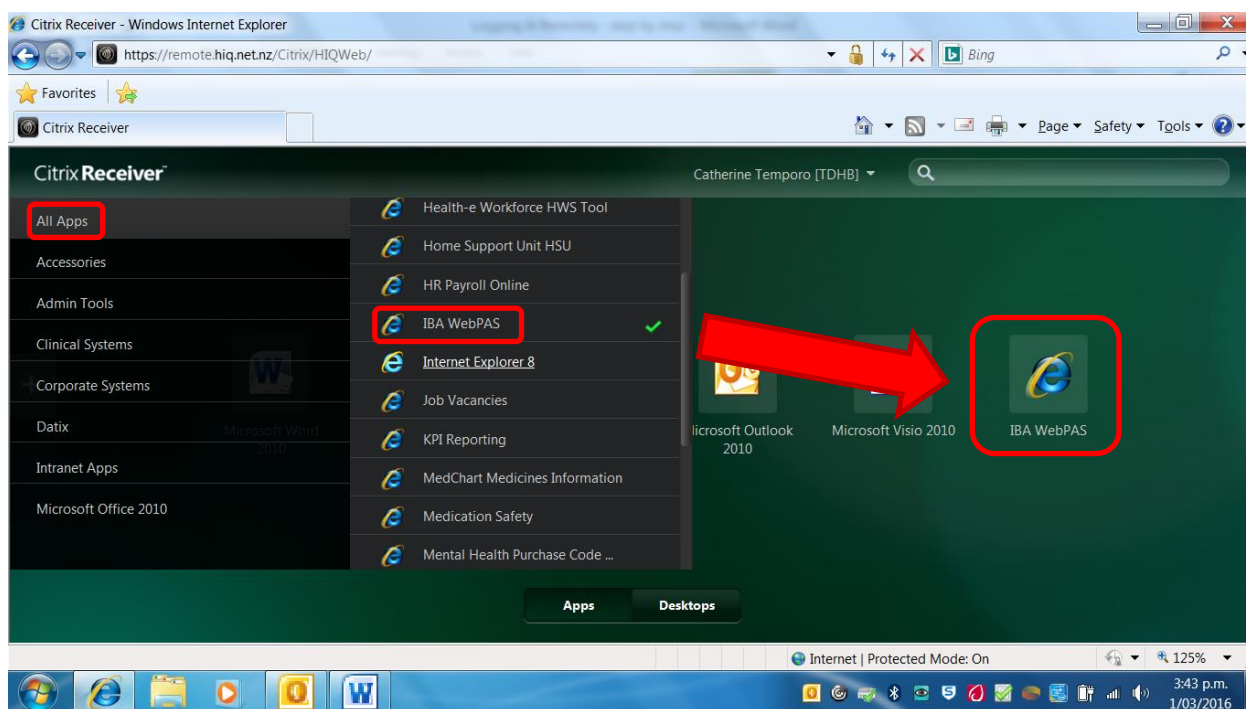
- Select the application group eg Clinical Systems



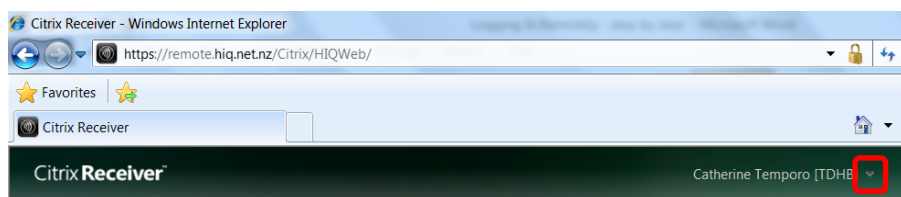
Tick the application eg Concerto



To view all applications, click All Apps. Select the application you use. The example below is IBA WebPAS



- To log off click on drop down arrow  (circled below)



- Select Log Off

