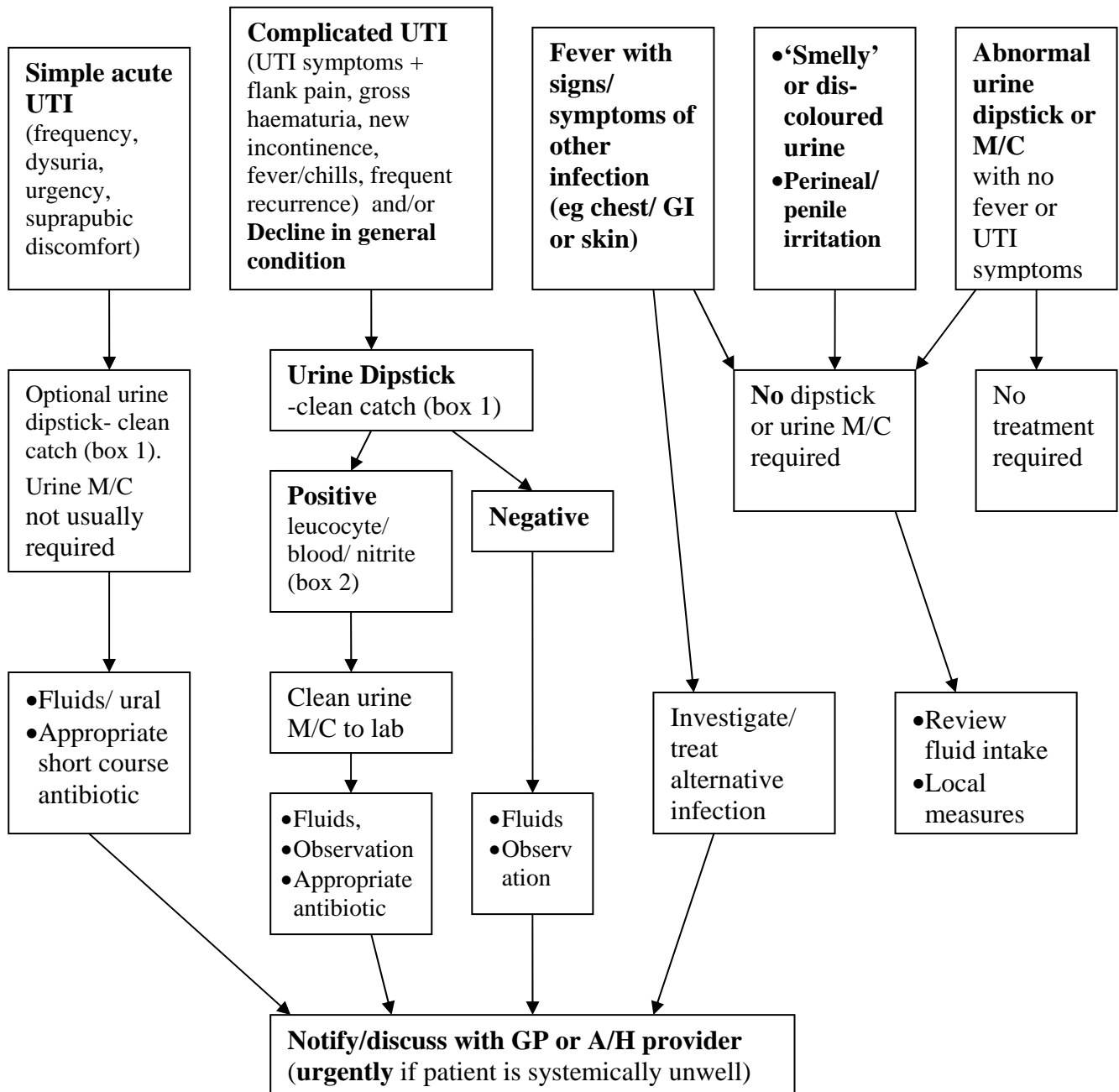


URINARY TRACT INFECTIONS (Elderly/ Rest Homes) INVESTIGATION/MANAGEMENT GUIDELINE -TARANAKI

Summary Algorithm for Rest Home Nursing Staff

February 2007 (Taranaki GDOG)

See full UTI & Bacteruria Guideline (Dec 2006) for detail (available TDHB website –GP Liaison page)



BOX 1: Clean-catch Urine Collection for dipstick or M/C:

- Wash hands
 - Separate labia (or retract prepuce)
 - Stand or squat over toilet or bed-pan
 - Discard first few ml, catch next part (approx. 20ml) in sterile container, discard remainder
 - Transfer urine into labelled specimen pot
 - Refrigerate if possible, get to lab as soon as possible (cold specimen: <24 hours, non-refrigerated spec: <1-2 hrs)
- Catheter** – take specimen from catheter port, not drainage bag.

BOX 2: Dipstick & Microscopy/Culture(M/C):

Definitions of abnormal urine

(clean-catch collection only (box 1)):

Bacteruria: >100 x10⁶ litre (x 2 for women, x1 men)

Pyuria: >100 x10⁶ wbc /litre

Dipstick: positive leucocytes
(inaccurate) positive nitrites (many false negatives)

(25-50% women & 15-40% men in rest homes have asymptomatic bacteriuria, even more have pyuria. These do not normally require antibiotics)