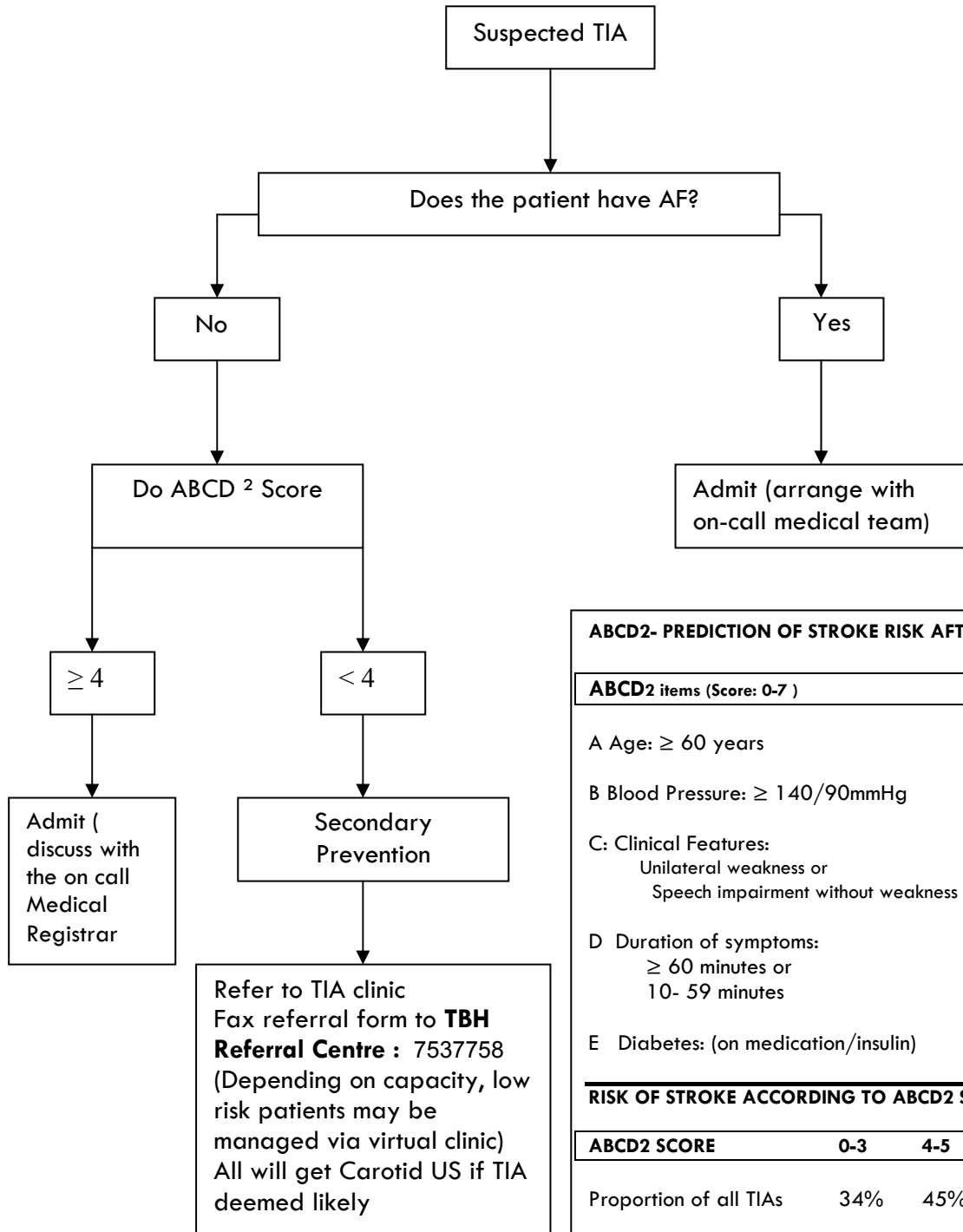


## Transient Ischaemic Attack (TIA) Referral Pathway For Patients Presenting to their GP



ABCD2- PREDICTION OF STROKE RISK AFTER TIA			
ABCD2 items (Score: 0-7)	Points		
A Age: ≥ 60 years	1		
B Blood Pressure: ≥ 140/90mmHg	1		
C: Clinical Features:			
Unilateral weakness or	2		
Speech impairment without weakness	1		
D Duration of symptoms:			
≥ 60 minutes or	2		
10- 59 minutes	1		
E Diabetes: (on medication/insulin)	1		
RISK OF STROKE ACCORDING TO ABCD2 SCORES			
ABCD2 SCORE	0-3	4-5	6-7
Proportion of all TIAs	34%	45%	21%
Stroke Risk (%) at			
2 days	1.0	4.1	8.1
7 days	1.2	5.9	11.7
90 days	3.1	9.8	17.8

**NOTE:**

- Patients taking anticoagulants
- Or
- With a history of crescendo TIAs
- Or
- They had had more than one TIA in the past week
- Or
- The attending clinician considers the patient is high risk, despite a low ABCD<sup>2</sup> score

→ **Should be Admitted to Hospital**